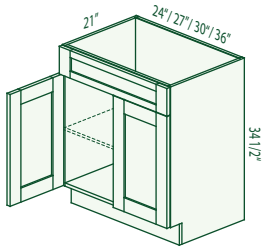
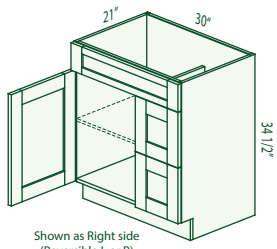


Revolution Series Bathroom Vanities

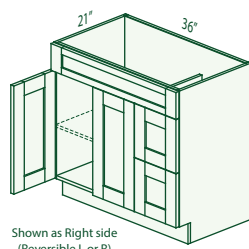


VA2421 VA2721
VA3021 VA3621



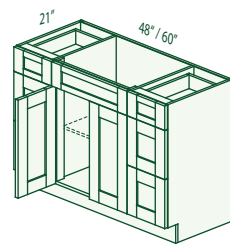
Shown as Right side
(Reversible L or R)

VA3021DL or R

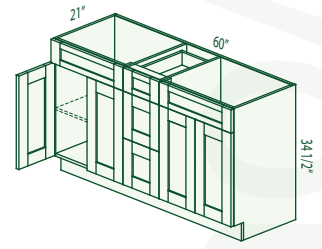


Shown as Right side
(Reversible L or R)

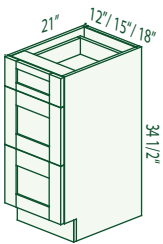
VA3621DL or R



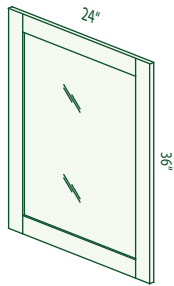
VA4821DLR
VA6021DLR



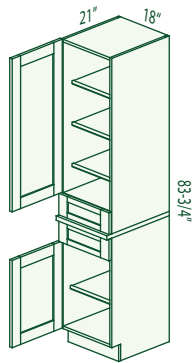
VA6021DC



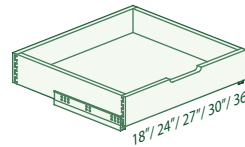
VDB1221-3
VDB1521-3
VDB1821-3



FM2436



VLCD188421-B



Roll Out Tray--(Optional)

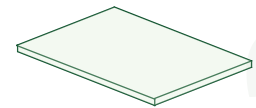
ROTD18 (available for
VLCD188421-B, VA3021DL or R)

ROTD24 (available for VA2421,
VA4821DLR, VA6021DC,
VA3621DL or R)

ROTD27 (available for VA2721)

ROTD30 (available for VA3021,
VA6021DLR)

ROTD36 (available for VA3621)



Shelf--(Optional)

Shelf -VA2421 (22 1/2 * 17 * 3/4")

Shelf -VA2721 (25 1/2 * 17 * 3/4")

Shelf -VA3021 (28 1/2 * 17 * 3/4")

Shelf -VA3621 (34 1/2 * 17 * 3/4")

Shelf -VA3021DL or R (17 1/4 * 17 * 3/4")

Shelf -VA3621DL or R (23 1/4 * 17 * 3/4")

Shelf -VA4821DLR (24 * 17 * 3/4")

Shelf -VA6021DLR (30 * 17 * 3/4")

Shelf -VA6021DC (23 1/4 * 17 * 3/4")

Shelf -VLCD188421-B (16 5/8 * 17 * 3/4")

Cabinet Construction Details

- ① **Cabinet Sides:** Cabinets sides are 3/4" thick plywood coated with a durable wood – grain washable melamine interior and finished melamine exterior. Sides are dadoed to accept the back panel for added rigidity.
- ② **Cabinets Interior Partitions Sides:** Cabinets interior partitions sides are 3/4" thick plywood coated with a durable wood – grain washable melamine interior.
- ③ **Cabinet Floor:** The cabinet floor is 3/4" plywood with a durable wood – grain washable melamine interior. The cabinet is held together with dowels to ensure a sturdy, long lasting cabinet.
- ④ **Cabinet Shelves:** Shelves are 3/4" thick plywood coated with a durable wood – grain washable melamine veneer and are edge-banded on three sides to match and one solid wood in front. (Shelves only come standard in VLCD1884, Shelves on other cabinet sizes are optional.)
- ⑤ **Cabinet Back:** The cabinet back is 1/4" plywood with a durable wood grain washable melamine interior and is recessed 3/4" from the back of the cabinet.
- ⑥ **I-Beam Reinforced Construction:** Cabinets are built with a reinforced i-beam construction to offer outstanding strength and stability for the cabinet.
- ⑦ **Hinges:** Six-way adjustable clip hinges are used easing removal of the doors for installation and providing a great range of adjustment.
- ⑧ **Hinges:** Our standard hinge also comes with soft close feature.
- ⑨ **Wood Doors:** 3/4" solid wood in the style and color of your choice.
- ⑩ **Matching Drawer Fronts:** 3/4" solid wood in the style and color of your choice.
- ⑪ **Drawer Box:** A drawer box is made from 3/4" solid maple and is dovetailed at each corner. The drawer bottom is dadoed into the drawer sides and it is fully captured. The whole drawer box gets a clear UV finish.
- ⑫ **Drawer Slides:** The drawer slide is concealed, undermount, full-extension slide with a 70 lb. capacity. This slide is of durable steel construction with a smooth gliding roller system and self-closing feature. Self-adjusting mounting brackets center the drawer for consistent operation. Our drawer slides also feature height adjustment tabs that allow for fine tuning the spacing of the drawer front.
- ⑬ **Shelf Supports:** Metal shelf clips are inserted into the sides of the cabinets and feature a locking mechanism with our plywood shelves.
- ⑭ **Matching Toe Kick:** 4 1/2" high toe space. A 3/4" thick plywood cover panel is available to match the finish of your cabinetry.
- ⑮ **Roll Out Tray (Optional):** Available in sizes 18", 24", 27", 30", and 36".

